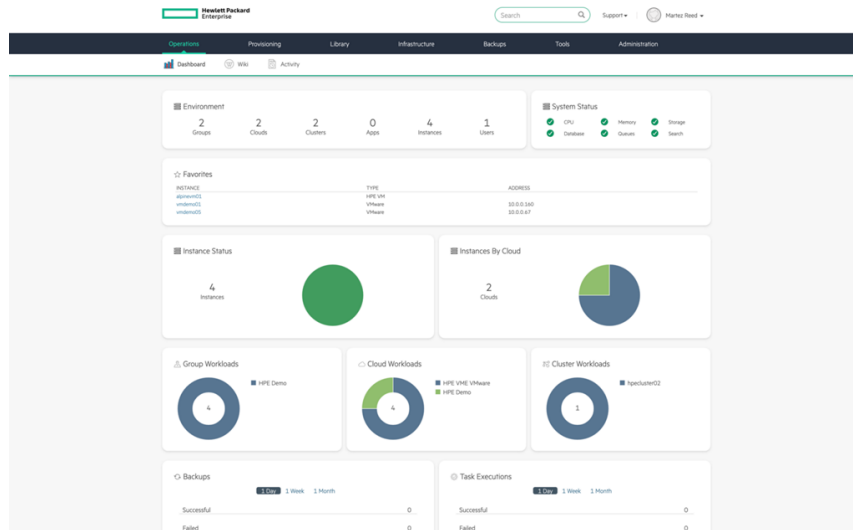


HPE VM Essentials Software



Overview

Are you looking for an alternative virtualization solution?

HPE VM Essentials Software is a virtualization solution that includes the HPE VM Essentials KVM based hypervisor for running virtualized workloads. The platform provides a unified virtual machine provisioning and management experience for HPE VME hypervisor and VMware® vSphere® virtual machines with the solution's ability to integrate with VMware vSphere. Integrations with IPAM, DNS, and automation tools enables tedious provisioning steps to be automated to simplify the provisioning of HPE VM Essentials and VMware virtual machines.

Features

Reduced Virtualization Costs

The HPE VM Essentials Software KVM based hypervisor enables IT organizations to adopt an affordable virtualization platform for hosting virtualized workloads.

Integrate with external storage (NFS, iSCSI, Fibre Channel) to take advantage of existing infrastructure investments.

Reduce operational overhead with a unified management solution to provision and manage HPE VM Essentials and VMware vSphere virtual machines.

Enterprise Virtualization Features

Enable workload resiliency with virtual machine high availability to quickly restart virtual machines on another physical host in the event of a host failure.

Migrate running virtual machines from one physical host to another within an HPE VM Essentials cluster without downtime to improve host utilization or to perform host maintenance.

HPE VM Essentials Software dynamically schedules the placement of VMs within its cluster based on intelligent placement logic that determines the optimal host for the VM.

Simplified Virtual Machine Provisioning

IT administrators can quickly provision VMware and HPE VM Essentials virtual machines using the solution's simplified provisioning wizard or REST API.

Through HPE VM Essentials integrations with IP Address Management (IPAM) solutions, Domain Name System (DNS) solutions, and automation tools (Bash and PowerShell), IT administrators can orchestrate additional provisioning steps.

HPE VM Essentials enables IT administrators to provision VMware virtual machines using their existing VMware virtual machine templates to simplify the deployment of new virtual machines.

Technical specifications

HPE VM Essentials Software

Warranty

Software: 90 days

Software (required)

Ubuntu® 22.04 (Open-source or Ubuntu Pro)

Platform supported

HPE ProLiant DL20 Gen11
 HPE ProLiant DL360 Gen11
 HPE ProLiant DL320 Gen11
 HPE ProLiant DL380 Gen11
 HPE ProLiant DL385 Gen11
 HPE ProLiant DL325 Gen11
 HPE ProLiant DL365 Gen11
 HPE ProLiant DL560 Gen11
 HPE ProLiant DL380a Gen11
 HPE ProLiant DL345 Gen11
 HPE ProLiant DL145 Gen11

Duration (term)

1-year, 3-year, or 5-year

Pre-requisites

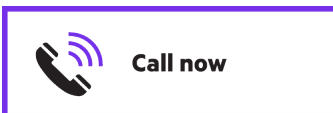
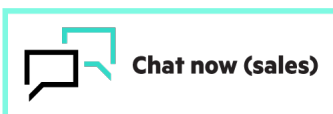
Available on supported platforms only



[For additional technical information, available models and options, please reference the QuickSpecs](#)

**Make the right purchase decision.
Contact our presales specialists.**

[Find a partner](#)



HPE Services

No matter where you are in your transformation journey, you can count on HPE Services to deliver the expertise you need when, where and how you need it. From strategy and planning to deployment, ongoing operations and beyond, our experts can help you realize your digital ambitions.

Consulting services

Experts can help you map out your path to hybrid cloud and optimize your operations.

Managed services

HPE runs your IT operations, giving you unified control, so you can focus on innovation.

Operational services

Optimize your entire IT environment and drive innovation. Manage day-to-day IT operational tasks while freeing up valuable time and resources.

- HPE Complete Care Service: a modular service designed to help optimize your entire IT environment and achieve agreed upon IT outcomes and business goals. All delivered by an assigned team of HPE experts.
- HPE Tech Care Service: the operational service experience for HPE products. The service provides access to product specific experts, an AI driven digital experience, and general technical guidance to help reduce risk and search for ways to do things better.

Lifecycle Services

Address your specific IT deployment project needs with tailored project management and deployment services.

HPE Education Services

Training and certification designed for IT and business professionals across all industries. Create learning paths to expand proficiency in a specific subject. Schedule training in a way that works best for your business with flexible continuous learning options.

The Defective Media Retention (DMR) service feature option applies only to Disk or eligible SSD/Flash Drives replaced by Hewlett Packard Enterprise due to malfunction. Comprehensive Defective Material Retention (CDMR) allows you to keep all data retentive components.

HPE GreenLake

HPE GreenLake edge-to-cloud platform is HPE's market-leading as-a-Service offering that brings the cloud experience to apps and data everywhere – data centers, multi-clouds, and edges – with one unified operating model, on premises, fully managed in a pay per use model.

If you are looking for more services, like **IT financing solutions**, please explore them [here](#).

Explore **HPE GreenLake** 

© Copyright 2024 Hewlett Packard Enterprise Development LP. The information contained herein is subject to change without notice. The only warranties for Hewlett Packard Enterprise products and services are set forth in the express warranty statements accompanying such products and services. Nothing herein should be construed as constituting an additional warranty. Hewlett Packard Enterprise shall not be liable for technical or editorial errors or omissions contained herein.

Parts and Materials: HPE will provide HPE-supported replacement parts and materials required to maintain the covered hardware.

Parts and components that have reached their maximum supported lifetime and/or the maximum usage limitations as set forth in the manufacturer's operating manual, product quick-specs, or the technical product data sheet will not be provided, repaired, or replaced as part of these services.

VMware® is a registered trademark of VMware, Inc. in the United States and/or other jurisdictions.
vSphere® is a registered trademark of VMware, Inc. in the United States and/or other jurisdictions.
Ubuntu® is a registered trademark of Canonical, Inc. in the United States and/or other jurisdictions.

Image may differ from the actual product
[PSN1014875616CZEN](#), December, 2024.