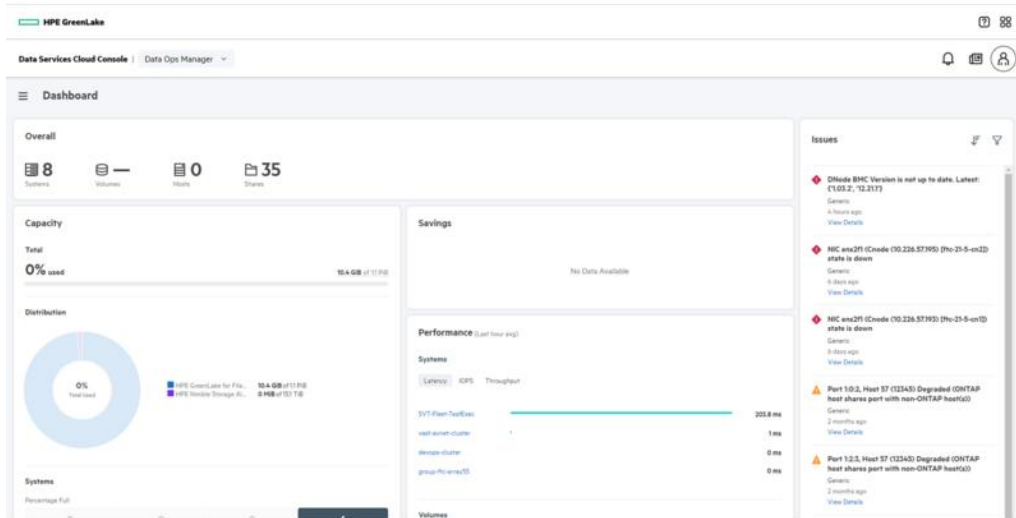


HPE GreenLake for Block Storage MP



What's new

- Transform from LUN-centric to AI-driven, app centric storage provisioning. No storage expertise required, and no more guesswork.
- Unified cloud management enables you to globally manage and monitor your entire fleet of block storage from a single SaaS-based cloud console that's accessible from any location, on any device.
- Independently scale capacity and performance – for more efficiency and lower

Overview

HPE GreenLake for Block Storage brings mission-critical storage to the mid-range – delivering enterprise-class resiliency, performance and scalability at an affordable price. Powered by the new HPE Alletra Storage MP hardware platform, HPE GreenLake for Block Storage is the industry's first disaggregated, scale-out block storage with 100% availability guaranteed. Get an intuitive, AI-driven cloud experience on-prem that simplifies management and shifts operations from infrastructure-centric to app-centric.

Empower line of business with intelligent, self-service

costs. Start small, scale big – without disruption.

- Accelerate mission-critical apps with all-NVMe mission-critical storage delivering predictable high-performance, and ultra low latency.
- Designed for extreme availability requirements with 100% availability guaranteed [2] as a standard benefit without requiring a special contract.
- Say goodbye to endless firefighting thanks to industry-leading AI Ops for infrastructure that drives autonomous operations and helps ensure your apps are always on and always fast.

provisioning while managing and protecting workloads across your hybrid cloud from a single cloud console. Scale performance and capacity independently — and without disruption — with disaggregated storage. Meet every SLA with mission-critical storage that delivers an unrivalled 100% data availability guarantee. Accelerate your most demanding apps with consistently fast performance and ultra-low latency — even at scale.

Features

Simplify Management with an Intuitive Cloud Experience on Prem

Simplify operations and move faster with a cloud operational experience: Reduce on-premises storage complexity across the lifecycle— from install to upgrade — with an AI-driven cloud operational experience powered by the HPE GreenLake Edge to Cloud Platform.

Simplified deployment: Get started in minutes with streamlined device deployment. Simply rack the infrastructure, plug in the power cords, and connect the network cables. With a few clicks, the new system is configured and available in your fleet, ready to serve data for application workloads.

Deploy apps faster: Automate app deployment with intent-based provisioning. Select the storage tier, workload type, capacity and protection policy, and let AI-driven intelligence automatically optimize your SLAs by recommending the best-suited system across your fleet for your new workload.

Unified storage management: 100% cloud-managed infrastructure means you can manage, monitor and protect your global storage environment from a single cloud console that's accessible from any location, on any device - so managing hundreds of systems across geographies is as simple as managing one.

Invisible upgrades: Thanks to SaaS-based delivery, new data services instantly become available to you. Data plane software upgrades are non-disruptive and intelligently matched to a given system.

Better Performance, Better Economics with Disaggregated, Scale out Storage

Scale without limitations: Scale capacity and performance independently with disaggregated, scale-out storage – for greater efficiency and lower costs. Fine-tune, adapt and elastically scale your storage environments in line with workload requirements and evolving business needs. [1]

Start small, scale big: Start small with cost-efficient two-node entry level configurations. Scale-up and scale-out to multi-node configurations with granular performance and capacity upgrades.

Non-disruptive upgrades: Maximize ROI with on-line, non-disruptive, data-in-place upgrades without repurchasing existing storage.

Run any app – Without Compromise with a 100% Data Availability Guarantee

Get peace of mind with 100% data availability guaranteed [2]: Built on an AI-driven, disaggregated, no single point of failure platform to guarantee resilient 100% data availability for your mission-critical apps.

Advanced DR and HA: Meet any recovery-point objective (RPO) and recovery-time objective (RTO) strategy with transparent business continuity and automatic fail-over across multiple sites, as well as getting simple and efficient hybrid cloud data



protection for on-prem and cloud native workloads.

Accelerate your most demanding applications: Built on a unique, massively parallel, multi-node, and all-active platform, HPE GreenLake for Block Storage consolidates traditional and next-generation mission-critical applications at scale with predictable performance and ultra-low latency.

Industry’s most advanced AI-Ops: Predict and prevent disruptions before they occur across the stack and pinpoint issues between storage and VMs and under-utilized resources. Take the guesswork out of managing storage with AI-driven recommendations that improve performance and availability.

Transformed support experience: Eliminate time-consuming, frustrating escalations via predictive support automation and direct access to the experts and resources you need.

Technical specifications

HPE GreenLake for Block Storage MP

Drive description	NVMe SFF encrypted SSD: 1.92 TB, 3.84 TB, 7.68 TB, 15.36 TB
Capacity	Up to 368 TB per enclosure up to 1.1 PB per solution
Host interface	32Gb/s Fibre Channel, 10/25GbE iSCSI
Enclosures	2U form factor of HPE Alletra Storage MP
Storage controller	Redundant HPE Alletra Storage MP 32-core, HPE Alletra Storage MP 16-core, HPE Alletra Storage MP 8-core
Maximum drives per enclosure	24 per enclosure up to two (2) expansion shelves per solution
Cache	n/a
Availability features	Redundant power, cooling modules, and fans; A minimum of dual redundant controller nodes
Compatible operating systems	Microsoft® Windows® Server and Microsoft® Hyper-V™ VMware ESX and ESXi Red Hat® Enterprise Linux® SUSE® Linux Enterprise Server (SLES)
Warranty	1-year, parts-only warranty for hardware components

[1] Disaggregated, multi-node configurations are planned for future availability.

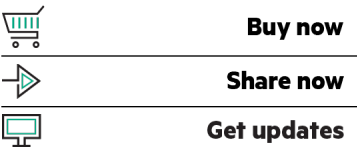
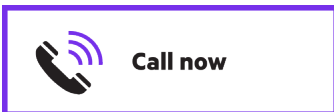
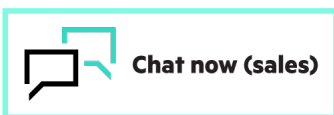
[2] 100% Data Availability Guarantee:
hpe.com/psnow/doc/a00058506enw?from=app§ion=search&isFutureVersion=true



For additional technical information, available models and options, please reference the [QuickSpecs](#)

Make the right purchase decision.
Contact our presales specialists.

[Find a partner](#)



HPE Services

No matter where you are in your transformation journey, you can count on HPE Services to deliver the expertise you need when, where and how you need it. From strategy and planning to deployment, ongoing operations and beyond, our experts can help you realize your digital ambitions.

Consulting services

Experts can help you map out your path to hybrid cloud and optimize your operations.

Managed services

HPE runs your IT operations, giving you unified control, so can focus on innovation.

Operational services

Optimize your entire IT environment and drive innovation. Manage day-to-day IT operational tasks while freeing up valuable time and resources.

- HPE Complete Care Service: a modular service designed to help optimize your entire IT environment and achieve agreed upon IT outcomes and business goals. All delivered by an assigned team of HPE experts.
- HPE Tech Care Service: the operational service experience for HPE products. The service provides access to product specific experts, an AI driven digital experience, and general technical guidance to help reduce risk and search for ways to do things better.

Lifecycle Services

Address your specific IT deployment project needs with tailored project management and deployment services.

HPE Education Services

Training and certification designed for IT and business professionals across all industries. Create learning paths to expand proficiency in a specific subject. Schedule training in a way that works best for your business with flexible continuous learning options.

The [Defective Media Retention \(DMR\)](#) service feature option applies only to Disk or eligible SSD/Flash Drives replaced by Hewlett Packard Enterprise due to malfunction. [Comprehensive Defective Material Retention \(CDMR\)](#) allows you to keep all data retentive components.

HPE GreenLake

HPE GreenLake edge-to-cloud platform is HPE's market-leading as-a-Service offering that brings the cloud experience to apps and data everywhere – data centers, multi-clouds, and edges – with one unified operating model, on premises, fully managed in a pay per use model.

If you are looking for more services, like **IT financing solutions**, please explore them [here](#).



© Copyright 2023 Hewlett Packard Enterprise Development LP. The information contained herein is subject to change without notice. The only warranties for Hewlett Packard Enterprise products and services are set forth in the express warranty statements accompanying such products and services. Nothing herein should be construed as constituting an additional warranty. Hewlett Packard Enterprise shall not be liable for technical or editorial errors or omissions contained herein.

Parts and Materials: HPE will provide HPE-supported replacement parts and materials required to maintain the covered hardware.

Parts and components that have reached their maximum supported lifetime and/or the maximum usage limitations as set forth in the manufacturer's operating manual, product quick-specs, or the technical product data sheet will not be provided, repaired, or replaced as part of these services.

Image may differ from the actual product
[PSN1014727563USEN](#), October, 2023.